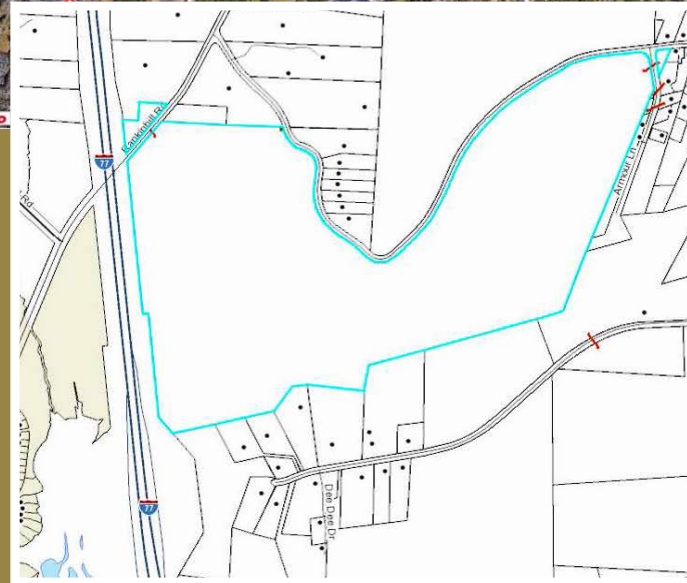
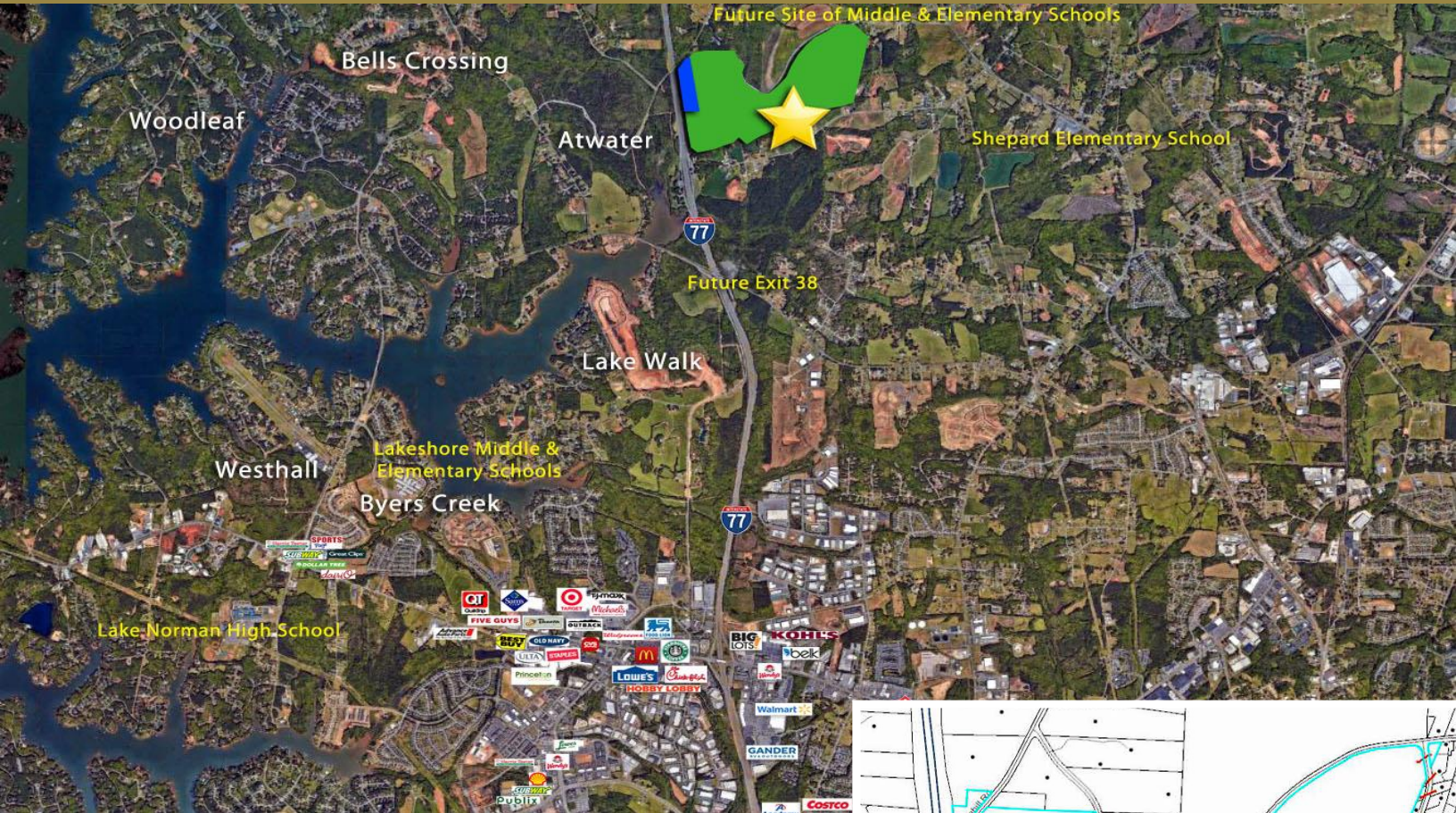


187 (+/-) Acre Tract

Parkertown & Rankin Hill Roads
 Mooresville NC 28117



HIGHLIGHTS:

- » 187.6 (+/-) acres - zoned RA
- » Adjacent to proposed Iredell-Statesville Elementary & Middle School campus
- » 1.16 mi. to proposed Exit 38 and 3.26 mi to Exit 36
- » Adjacent to I-77 and Hwy 21
- » ADT on I-77 - 58,500 (2018)

| DEMOGRAPHICS | 1 MILE | 3 MILE | 5 MILE |
|------------------------|----------|----------|----------|
| 2019 Population | 1,454 | 15,296 | 46,543 |
| 2019 Average HH Income | \$51,288 | \$86,413 | \$86,376 |

Princeton
 communities

132 Joe Knox Ave, Suite 105
 Mooresville, NC 28117
 704-799-9770